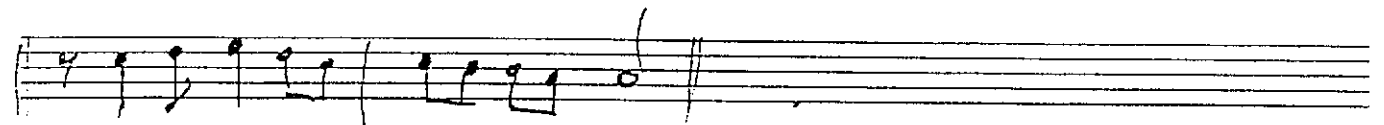


M. H. İ. R. D. İ.

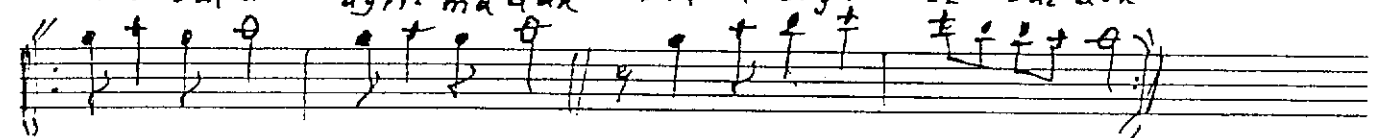
ZALİMİN ZÜLMÜ

Söz Müğ. k.
S. V. S. S. S. S. S.

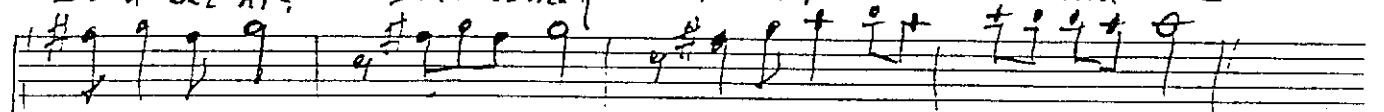
♩ = KODA



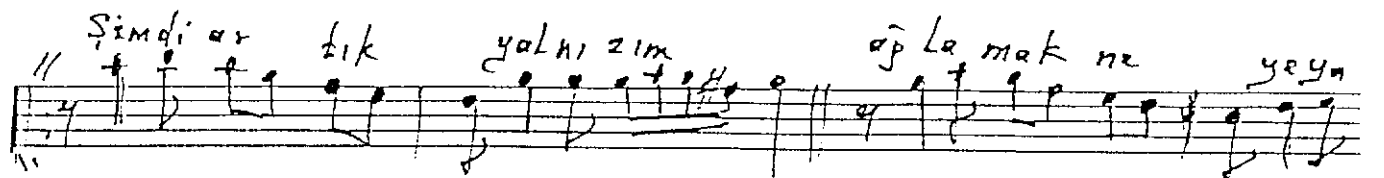
Da habenden ayırlmadık Bırkasırgı lı bulduk



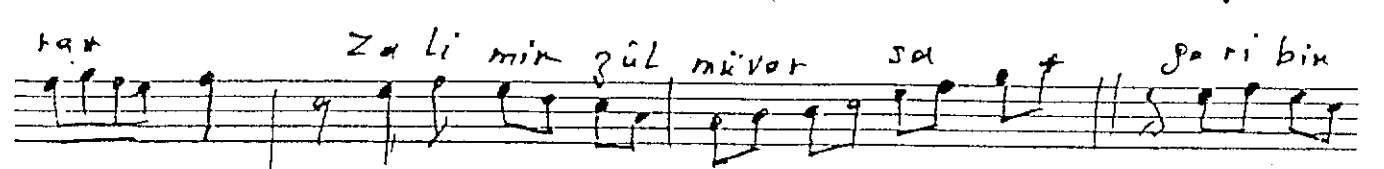
Saadet hiç belliolmay. Şimdi çok mu? Lu mu sun



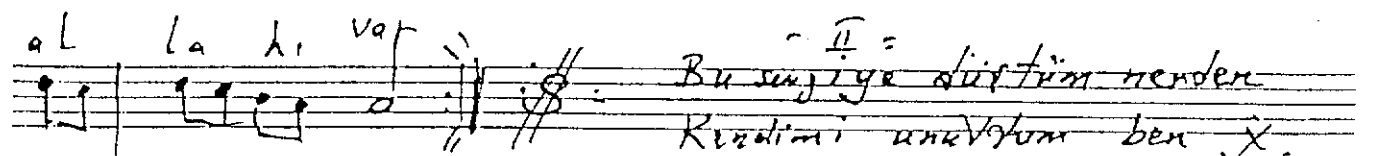
Saz? Hı: Hayatımı sana verdim
Gencliğim pitti elden



Şimdi ar tık yalrı zım ayla mak ne yeyn



Za li min zül mü var sa ga ri bin



al la hı var Bu senjiye dürtüm nenden
Kendimi unuttum ben X.